



Date _____

Approval	Resubmit	File	Other	_____
Project	_____	Architect	_____	_____
Location	_____	Engineer	_____	_____
Rep	_____	GC	_____	_____
Rep PM	_____	Mech Contr	_____	_____
Unit(s) Tag(s)	_____			



Product Data

Configuration	Voltage (V/Ph/Hz)	Motor	Quantity of Fan Blowers	Filter Thickness (in)	Water Connections	
					Coil MNPT (in)	Condensate MNPT (in)
2 pipe	115/1/60 220/1/60	ECM	1	1/8	1/2	5/8

Capacity, Sound and Electrical

Configuration	Speed	Air	Cooling (BTU/Hr)		Heating	Sound (dB(A))		Electrical	
		Air Flow (CFM)	Cooling Capacity	Sensible Cooling Capacity	Heating Capacity (BTU/Hr)	Sound Pressure Level (Outlet / Inlet + Radiated)	Sound Power Level (Outlet / Inlet + Radiated)	Fan Motor Power (W)	Fan Motor Running Current @H speed (A) 115V/220V
2 pipe	H	223	6243	4255	9705	33	42	13	0.23/0.12
	M	159	4824	3241	7499	27	36	9	
	L	118	3800	2507	5908	25	34	7	

Nominal Conditions

2-pipe



Cooling:

80°F DB/67°F WB
EWT/LWT = 45°F/55°F

Heating:

EAT = 70°F
EWT = 140°F

Control and Valve Options

Control Options		Integrated Valves Options	
I Type (Full Control)	W Type (Flexi Control)	2 Way	3 Way
 IR Handset	 WWP V3 Wired Wall Pad	For external thermostat applications On-Off Modulating	On-Off

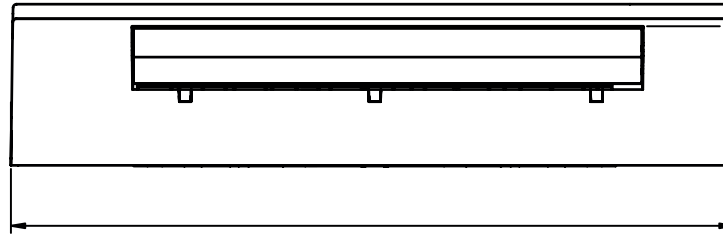
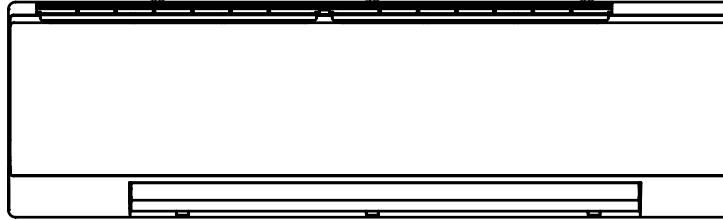
- **I Type (Full Control):** Controlled with BMS or POLAR AIR wall pad and/or IR Handset
- **W Type (Flexible Control):** Controlled with a External thermostat/controller*
* Provided by others

Other Options

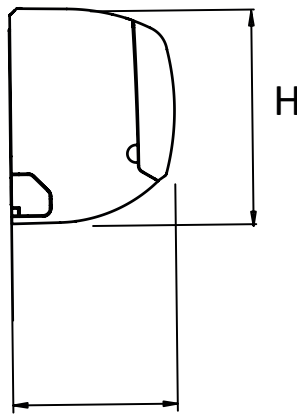
PTC Electrical Heater	
115V	220V
0.5 kW	1 kW

Dimensional Data

Net Weigh: 26.5 lbs



L



H

W

Dimensions (in)		
L	W	H
39 3/4	9 1/16	11 13/16

*Product dimensions are within $\pm 1/16$ inches.



Date _____

Approval	Resubmit	File	Other	_____
Project	_____	_____	Architect	_____
Location	_____	_____	Engineer	_____
Rep	_____	_____	GC	_____
Rep PM	_____	_____	Mech Contr	_____
Unit(s) Tag(s)	_____			



Product Data

Configuration	Voltage (V/Ph/Hz)	Motor	Quantity of Fan Blowers	Filter Thickness (in)	Water Connections	
					Coil MNPT (in)	Condensate MNPT (in)
2 pipe	115/1/60 220/1/60	ECM	1	1/8	1/2	5/8

Capacity, Sound and Electrical

Configuration	Speed	Air	Cooling (BTU/Hr)		Heating	Sound (dB(A))		Electrical	
		Air Flow (CFM)	Cooling Capacity	Sensible Cooling Capacity	Heating Capacity (BTU/Hr)	Sound Pressure Level (Outlet / Inlet + Radiated)	Sound Power Level (Outlet / Inlet + Radiated)	Fan Motor Power (W)	Fan Motor Running Current @H speed (A) 115V/220V
2 pipe	H	323	8499	5869	13212	42	51	20	0.35/0.18
	M	223	6479	4391	10072	33	42	13	
	L	159	4939	3295	7678	27	36	9	

Nominal Conditions:

2-pipe



Cooling:

80°F DB/67°F WB
EWT/LWT = 45°F/55°F

Heating:

EAT = 70°F
EWT = 140°F

Control and Valve Options

Control Options		Integrated Valves Options	
I Type (Full Control)	W Type (Flexi Control)	2 Way	3 Way
 IR Handset	 WWP V3 Wired Wall Pad	For external thermostat applications	On-Off Modulating On-Off

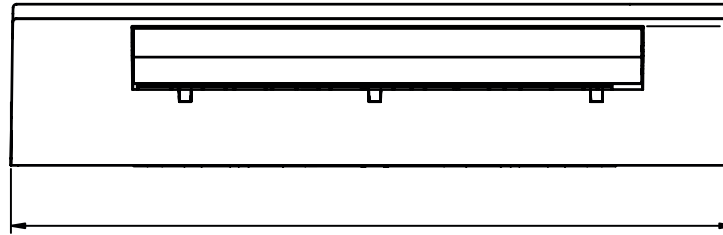
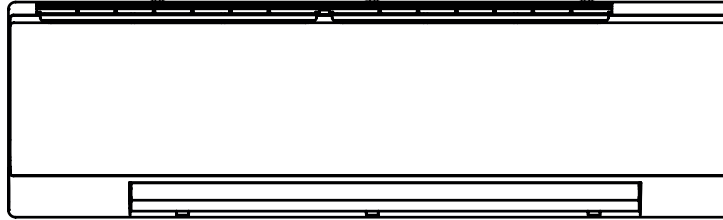
- **I Type (Full Control):** Controlled with BMS or POLAR AIR wall pad and/or IR Handset
- **W Type (Flexible Control):** Controlled with a External thermostat/controller*
* Provided by others

Other Options

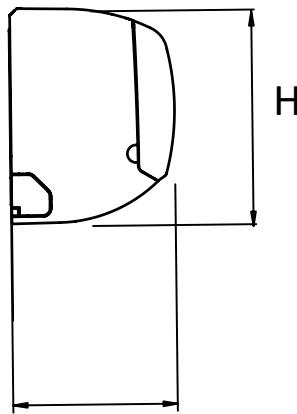
PTC Electrical Heater	
115V	220V
0.5 kW	1 kW

Dimensional Data

Net Weigh: 30.9 lbs



L



W

Dimensions (in)		
L	W	H
39 3/4	9 1/16	11 13/16

*Product dimensions are within ± 1/16 inches.



Date _____

Approval	Resubmit	File	Other	_____
Project	_____	Architect	_____	_____
Location	_____	Engineer	_____	_____
Rep	_____	GC	_____	_____
Rep PM	_____	Mech Contr	_____	_____
Unit(s) Tag(s)	_____			



Product Data

Configuration	Voltage (V/Ph/Hz)	Motor	Quantity of Fan Blowers	Filter Thickness (in)	Water Connections	
					Coil MNPT (in)	Condensate MNPT (in)
2 pipe	115/1/60 220/1/60	ECM	1	1/8	1/2	5/8

Capacity, Sound and Electrical

Configuration	Speed	Air	Cooling (BTU/Hr)		Heating	Sound (dB(A))		Electrical	
		Air Flow (CFM)	Cooling Capacity	Sensible Cooling Capacity	Heating Capacity (BTU/Hr)	Sound Pressure Level (Outlet / Inlet + Radiated)	Sound Power Level (Outlet / Inlet + Radiated)	Fan Motor Power (W)	Fan Motor Running Current @H speed (A) 115V/220V
2 pipe	H	400	11136	7657	17311	47	56	30	0.52/0.27
	M	323	9606	6522	14933	42	51	20	
	L	200	6564	4367	10205	27	36	11	

Nominal Conditions

2-pipe



Cooling:

80°F DB/67°F WB
EWT/LWT = 45°F/55°F

Heating:

EAT = 70°F
EWT = 140°F

Control and Valve Options

Control Options		Integrated Valves Options	
I Type (Full Control)	W Type (Flexi Control)	2 Way	3 Way
 IR Handset	 WWP V3 Wired Wall Pad	For external thermostat applications	On-Off Modulating On-Off

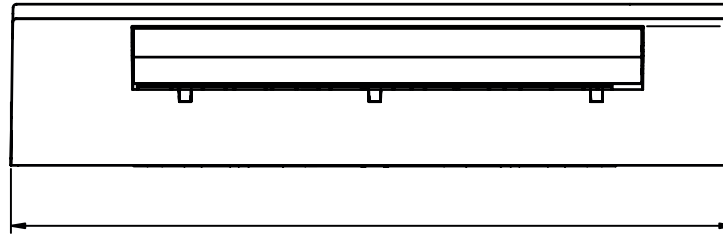
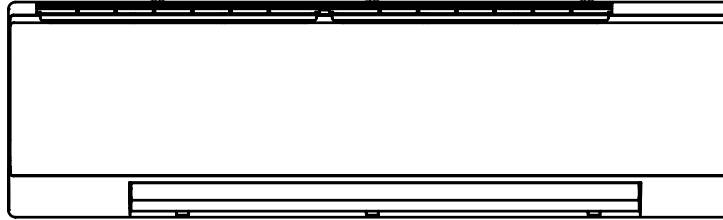
- **I Type (Full Control):** Controlled with BMS or POLAR AIR wall pad and/or IR Handset
- **W Type (Flexible Control):** Controlled with a External thermostat/controller*
* Provided by others

Other Options

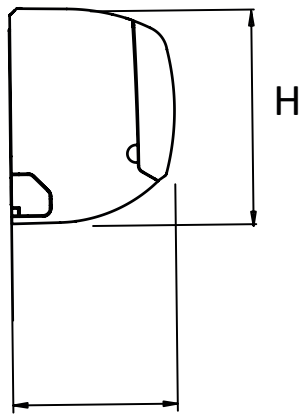
PTC Electrical Heater	
115V	220V
0.75 kW	1.5 kW

Dimensional Data

Net Weight: 33.1 lbs



L



H

W

Dimensions (in)		
L	W	H
39 3/4	9 1/16	11 13/16

*Product dimensions are within $\pm 1/16$ inches.



Date _____

Approval	Resubmit	File	Other	_____
Project	_____	_____	Architect	_____
Location	_____	_____	Engineer	_____
Rep	_____	_____	GC	_____
Rep PM	_____	_____	Mech Contr	_____
Unit(s) Tag(s)	_____			



Product Data

Configuration	Voltage (V/Ph/Hz)	Motor	Quantity of Fan Blowers	Filter Thickness (in)	Water Connections	
					Coil MNPT (in)	Condensate MNPT (in)
2 pipe	115/1/60	ECM	1	1/8	1/2	5/8
4 pipe	220/1/60					



Capacity, Sound and Electrical

Configuration	Speed	Air	Cooling (BTU/Hr)		Heating	Sound (dB(A))		Electrical	
		Air Flow (CFM)	Cooling Capacity	Sensible Cooling Capacity	Heating Capacity (BTU/Hr)	Sound Pressure Level (Outlet / Inlet + Radiated)	Sound Power Level (Outlet / Inlet + Radiated)	Fan Motor Power (W)	Fan Motor Running Current @H speed (A) 115V/220V
2 pipe	H	464	14767	9980	22957	50	59	38	0.66/0.35
	M	353	12102	8048	18813	45	54	25	
	L	224	8508	5538	13226	33	42	13	
4 pipe	H	464	10623	7099	8793	50	59	38	0.66/0.35
	M	353	8706	5725	7156	45	54	25	
	L	224	6120	3939	5036	33	42	13	

Nominal Conditions

2-pipe	Cooling:	80°F DB/67°F WB EWT/LWT = 45°F/55°F	Heating:	EAT = 70°F EWT = 140°F
4-pipe	Cooling:	80°F DB/67°F WB EWT/LWT = 45°F/55°F	Heating:	EAT = 70°F EWT/LWT = 180°F/140°F

Control and Valve Options

Control Options		Integrated Valves Options	
I Type (Full Control)	W Type (Flexi Control)	2 Way	3 Way
 IR Handset	 WWP V3 Wired Wall Pad	For external thermostat applications	On-Off Modulating On-Off

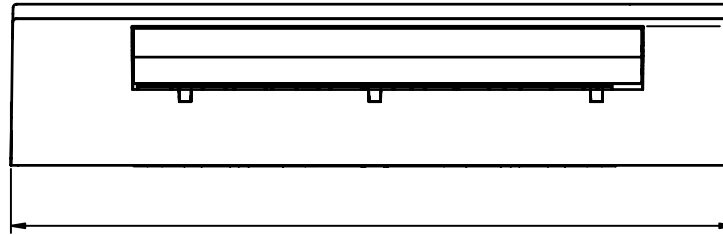
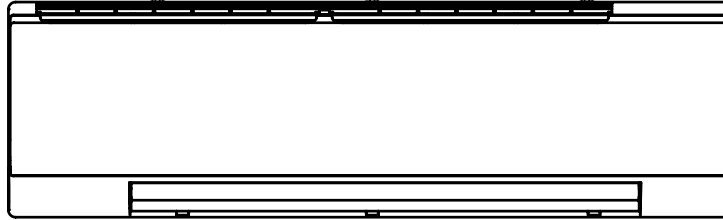
- **I Type (Full Control):** Controlled with BMS or POLAR AIR wall pad and/or IR Handset
- **W Type (Flexible Control):** Controlled with a External thermostat/controller*
* Provided by other

Other Options

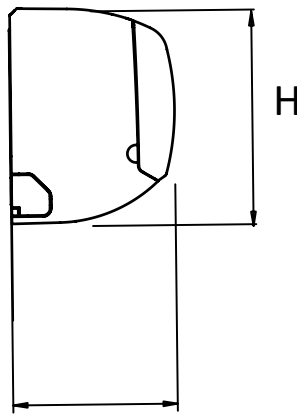
PTC Electrical Heater	
115V	220V
0.75 kW	1.5 kW

Dimensional Data

Net Weight: 37.5 lbs



L



H

W

Dimensions (in)		
L	W	H
39 3/4	9 1/16	11 13/16

*Product dimensions are within $\pm 1/16$ inches.



Date _____

Approval	Resubmit	File	Other	_____
Project	_____	_____	Architect	_____
Location	_____	_____	Engineer	_____
Rep	_____	_____	GC	_____
Rep PM	_____	_____	Mech Contr	_____
Unit(s) Tag(s)	_____			



Product Data

Configuration	Voltage (V/Ph/Hz)	Motor	Quantity of Fan Blowers	Filter Thickness (in)	Water Connections	
					Coil MNPT (in)	Condensate MNPT (in)
2 pipe	115/1/60 220/1/60	ECM	1	1/8	1/2	5/8

Capacity, Sound and Electrical

Configuration	Speed	Air	Cooling (BTU/Hr)		Heating	Sound (dB(A))		Electrical	
		Air Flow (CFM)	Cooling Capacity	Sensible Cooling Capacity	Heating Capacity (BTU/Hr)	Sound Pressure Level (Outlet / Inlet + Radiated)	Sound Power Level (Outlet / Inlet + Radiated)	Fan Motor Power (W)	Fan Motor Running Current @H speed (A) 115V/220V
2 pipe	H	617	17017	11587	26454	50	59	50	0.87/0.45
	M	500	14381	9670	22357	45	54	31	
	L	300	9774	6427	15195	32	41	12	

Nominal Conditions

2-pipe



Cooling:

80°F DB/67°F WB
EWT/LWT = 45°F/55°F

Heating:

EAT = 70°F
EWT = 140°F

Control and Valve Options

Control Options		Integrated Valves Options	
I Type (Full Control)	W Type (Flexi Control)	2 Way	3 Way
 <p>IR Handset</p>	 <p>WWP V3 Wired Wall Pad</p>	<p>For external thermostat applications</p>	<p>On-Off Modulating</p>

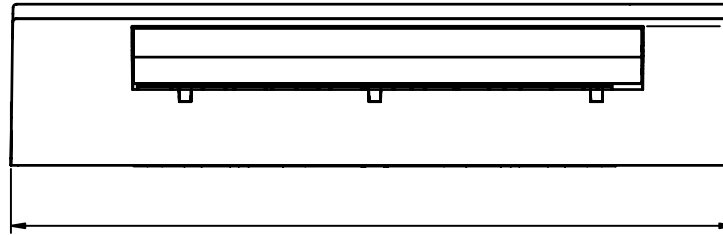
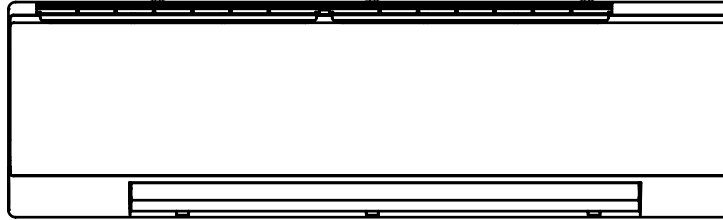
- **I Type (Full Control):** Controlled with BMS or POLAR AIR wall pad and/or IR Handset
- **W Type (Flexible Control):** Controlled with a External thermostat/controller*
* Provided by other

Other Options

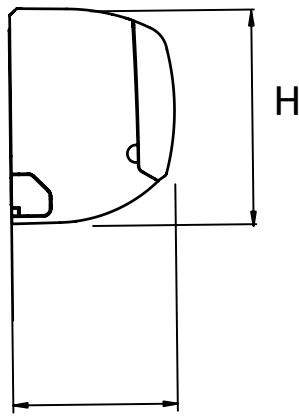
PTC Electrical Heater	
115V	220V
0.75 kW	1.5 kW

Dimensional Data

Net Weight: 39.7 lbs



L



H

W

Dimensions (in)		
L	W	H
46 1/4	9 1/16	11 13/16

*Product dimensions are within ± 1/16 inches.



Date _____

Approval	Resubmit	File	Other	_____
Project	_____	_____	Architect	_____
Location	_____	_____	Engineer	_____
Rep	_____	_____	GC	_____
Rep PM	_____	_____	Mech Contr	_____
Unit(s) Tag(s)	_____			



Product Data

Configuration	Voltage (V/Ph/Hz)	Motor	Quantity of Fan Blowers	Filter Thickness (in)	Water Connections	
					Coil MNPT (in)	Condensate MNPT (in)
2 pipe	115/1/60	ECM	1	1/8	1/2	5/8
4 pipe	220/1/60					



Capacity, Sound and Electrical

Configuration	Speed	Air	Cooling (BTU/Hr)		Heating	Sound (dB(A))		Electrical	
		Air Flow (CFM)	Cooling Capacity	Sensible Cooling Capacity	Heating Capacity (BTU/Hr)	Sound Pressure Level (Outlet / Inlet + Radiated)	Sound Power Level (Outlet / Inlet + Radiated)	Fan Motor Power (W)	Fan Motor Running Current @H speed (A) 115V/220V
2 pipe	H	735	22200	15126	34509	53	62	65	1.13/0.59
	M	600	18927	12708	29422	48	57	40	
	L	353	12577	8251	19552	36	45	16	
4 pipe	H	735	16566	11067	12614	53	62	65	1.13/0.59
	M	600	14124	9297	10693	48	57	40	
	L	353	9385	6036	7156	36	45	16	

Nominal Conditions

2-pipe	Cooling:	80°F DB/67°F WB EWT/LWT = 45°F/55°F	Heating:	EAT = 70°F EWT = 140°F
4-pipe	Cooling:	80°F DB/67°F WB EWT/LWT = 45°F/55°F	Heating:	EAT = 70°F EWT/LWT = 180°F/140°F

Control and Valve Options

Control Options		Integrated Valves Options	
I Type (Full Control)	W Type (Flexi Control)	2 Way	3 Way
 IR Handset	 WWP V3 Wired Wall Pad	For external thermostat applications	On-Off Modulating On-Off

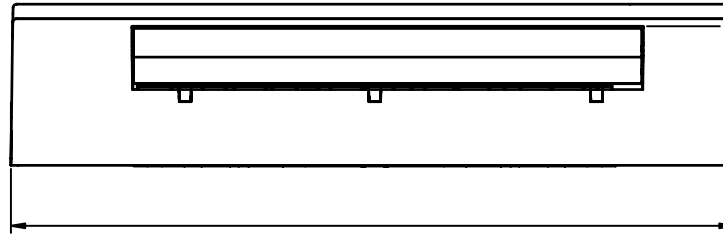
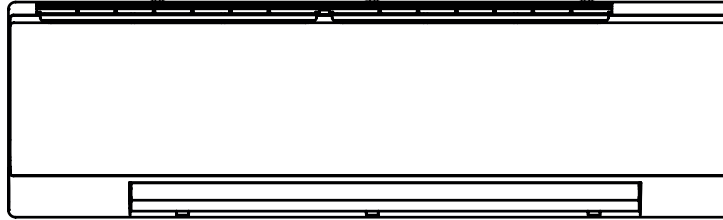
- **I Type (Full Control):** Controlled with BMS or POLAR AIR wall pad and/or IR Handset
- **W Type (Flexible Control):** Controlled with a External thermostat/controller*
* Provided by other

Other Options

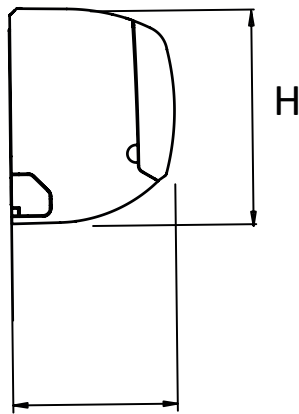
PTC Electrical Heater	
115V	220V
0.75 kW	1.5 kW

Dimensional Data

Net Weight: 41.9 lbs



L



W

Dimensions (in)		
L	W	H
46 1/4	9 1/16	11 13/16

*Product dimensions are within ± 1/16 inches.